



PROFESSIONAL
MANUFACTURE



青岛朗锐机械有限责任公司

工厂地址：山东省青岛市即墨市区龙山办事处，后北葛村西100米
销售地址：广东省佛山市顺德区伦教木工机械城鑫海臺科展厅（银晶楼1-4）
销售热线：86-757-28662178
业务手机：86-13606398281
公司邮箱：highendsanding@163.com
网站：www.highendmac.com

Factory Add: West of Hou Bei Ge Village, Longshan, Jimo, Qingdao, Shandong Province.
Sales address: Highend Exhibition Lunjiao Woodworking Machinery City Foshan Guangdong
Tel: 86-757-28662178
Mobile phone: 86-13606398281
Email: highendsanding@163.com
Website: www.highendmac.com

产品不断改良，当外形与参数变更时，均以实样为准，恕不另行通知

All specifications, dimensions and construction shown in this catalogue are subject to change without prior notice.



鑫海臺科
HIGHEND

◀ SANDER ▶

- 底面砂光机系列
- 刨木砂光机系列
- 单板砂光机系列
- 重型定厚砂光机系列
- 上浮式砂光机系列
- 上下连线砂光机系列
- 底漆砂光机系列
- 木皮贴面砂光机系列

砂光机匠心品牌

Originality brand OF SANDER

中国·青岛

◀ SANDER ▶



23年专注砂光机科研制造
23 years focused on the research and manufactruing of sander

23
years
focus

About

HIGHEND

鑫海臺科

人无信而不立，企业无信则不长，诚信经营，是企业的立身之本，公司把企业诚信建设看作加快企业发展方式，促进较快发展的重要战略举措。公司自创立以来一直本着勤、诚、信、拼的经营宗旨，致力于生产先进的砂光设备给国内外客户，在惊涛骇浪的市场竞争中我们已经取得鲜明的成就；始终致力于产品质量至上，以“顾客为先，优质服务，全面品管，持续改善，不断满足顾客需求”的质量方针为指引。根据多年的经验制定了一整套较为完善的售后服务规范，用规范的服务让用户感动，为用户创造价值，用规范的服务力求达到用户的满意；公司一直秉承“德重诚信，业求精新”的宗旨，坚持“以诚相待，以信为本，以优取胜”的经营理念，通过自身的高技术队伍和合作伙伴的技术后援，为客户提供各种完整的完善的解决方案的优质的售后服务。

产品成熟、质量上乘，不仅畅销国内二十九个省、市、自治区，而且远销俄罗斯、哈萨克斯坦、吉尔吉斯、亚美尼亚、乌克兰、马来西亚、印度尼西亚、菲律宾、越南、柬埔寨、印度、巴基斯坦、伊拉克、黎巴嫩、斯里兰卡、阿曼、缅甸、利比亚、尼日利亚、坦桑尼亚、加纳、塞拉利昂、南非、苏丹、肯尼亚、埃塞俄比亚、赞比亚、委内瑞拉、智利、刚果、尼加瓜等三十多个国家和地区，深受广大用户的好评。

People can't stand without honesty; Company can't last long without honesty. Operate with sincerity and honesty is the basis of company. HIGHEND regards enterprise honesty and trust building as important strategy for improving. We continually focus on products quality, insist on the policy of: Customer first, outstanding service, full aspect quality control, continually improvement, meeting customer's requirement unceasingly. Based on our rich experience, HIGHEND has built up perfect quality control and after-sales service system, to create value for customer with top quality, to satisfy customer with our service. Under the supporting of own high skill R&D team and partners' technical, we are capable to offer customer various complete and perfect sanding solutions and after-sales service.

Based on the refined products, top quality, beside selling to 29 provinces of China, our products also export to Russia, Australia, Italy, Spain, Ukraine, Kazakhstan, Kyrgyzstan, Armenia, Malaysia, Indonesia etc. more than 30 countries and gained high reputation for its performance!

鑫海臺科砂光机是一款高性价比的木工机械设备，适合对砂光精度和稳定性有一定要求但预算有限的用户。它在家具制造、木门加工和地板生产等领域表现出色，能够满足大多数木工加工需求。如果您需要一款实用、稳定且价格合理的砂光机，鑫海臺科是一个值得考虑的选择。

如果您有更高的精度需求或预算充足，也可以考虑国际顶级品牌（如意大利BIESSE、德国HOMAG等），但海泰科在中端市场中无疑是一个强有力的竞争者。

Xinhai Taike sanding machine is a cost-effective woodworking machinery equipment, suitable for users who have certain requirements for sanding accuracy and stability but have a limited budget. It has excelled in areas such as furniture manufacturing, wood door processing and floor production, and is able to meet most woodworking needs. If you need a practical, stable and affordable sander, Xinhai Taike is a choice worth considering.

If you have higher precision needs or a sufficient budget, you can also consider the international top brands (such as Italy's BIESSE, Germany's HOMAG, etc.), but Hytec is undoubtedly a strong competitor in the mid-market.

Company Profile

CONTENT

09



刨木砂光机 Planer Sander

15



上浮式砂光机 Upper floated Sander

23



底漆砂光机 Lacquer Sander

31



贴面专用砂光机 Veneer Laminating Sander

37



集成材砂光机 Glued laminated Timber Sander

43



定厚砂光机 Wide Belt Sander

SUR-R-P650 SFR-R-P650

Three Sanding Frame Wide Belt Sander

三砂架定厚砂光机



性能特点

节省时间、提升生产效率、节省人工成本。
变频调速、简介方便。
模块化设计，任意组合砂削方式，满足各种不同砂光需求。

Performance features

Save time, improve production efficiency, save labor costs
Inverter speed adjustment, easy and convenient
Modular design, any combination of sanding methods, to meet various sanding needs

SUR-R-P650

SFR-R-P650

Three Sanding Frame Wide Belt Sander

三砂架定厚砂光机

性能特点

Performance features



偏心加大胶定厚辊，加工精度高，偏心轴调整升降，方便、简洁，布局合理，操作简便。第三砂架抛光辊采用软橡胶抛光辊，提升砂品质。

Eccentric enlarged rubber roller, high precision. Eccentrically lift up and down, convenient and simple, easy operation. The 3rd roller frame use soft rubber material, improve the sanding quality.



偏心加大胶定厚辊，加工精度高，偏心轴调整升降，方便、简洁，布局合理，操作简便。第三砂架抛光辊采用软橡胶抛光辊，提升砂品质。

Eccentric enlarged rubber roller, high precision. Eccentrically lift up and down, convenient and simple, easy operation. The 3rd roller frame use soft rubber material, improve the sanding quality.



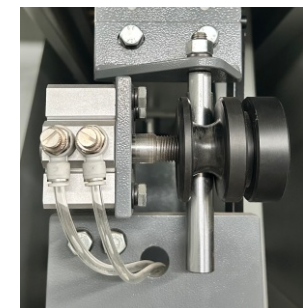
接触器运用法国施耐德品牌，稳定性高，主电机配有过载保护。

The electric parts adopt French brand-Schneider to ensure more stable. The main motor with overload protection system.



输送带采用台湾士林变频调整、操作简单方便。

The conveyor belt adopts Taiwan Shilin Frequency conversion adjustment, easy to operate.



新式摆动调整简便，摇摆柔和经久耐用。

The new swing adjustment is simple, the swing is soft and durable.



定厚仪采用按键式操控，精准度高，便于操作。

Constant thickness gauge with key type control, high precision,easy to operate



选用德国倍加福传感器控制砂带摆动及砂带跑偏

Choose Pepperl+Fuchs the sensor controls the sand belt swing and sand belt deviation



高端齿轮变频减速机，平稳持久耐用且与台湾士林变频器控制输送速度达到理想砂光效果。

High-end gear variable frequency reducer, stable and durable with Taiwan Shilin inverter control transmission speed to achieve the management want a sanding effect.

刨木砂光机技术参数

Planing wood sanding machine Specification

		SUR-R-P650	SFR-R-P650
最短加工长度	Shortest Processing Length	≤330mm	≤330mm
加工厚度	Processing thickness	3.0-150mm	3.0-150mm
第一砂架电机功率	First sand frame motor power	15kw	15kw
第二砂架电机功率	Second sand frame motor power	11kw	11kw
第三砂架电机功率	Third sand frame motor power	7.5kw	7.5kw
输送电机功率	Conveyor Motor Power	1.5kw（变频VFD）(2.2)	1.5kw（变频VFD）(2.2)
升降电机功率	Lift motor power	0.37kw	0.37kw
除尘毛刷电机功率	Dusting brush motor power	0.37kw	0.37kw
砂带尺寸	Belt size	1900*660mm	1900*660mm
工作气压	Working pressure	0.6-0.8mpa	0.6-0.8mpa
第一砂架线速度	1st Sanding Line Speed	22m/s	22m/s
第二砂架线速度	2nd Sanding Line Speed	22m/s	22m/s
第三砂架线速度	3rd Sanding Line Speed	11 m/s	11 m/s
吸尘风量	Dust Collecting Volume	4000m³/h	4000m³/h

数适用实木门、复合门、衣柜门、橱柜门等

Suitable for solid wood doors, composite doors, wardrobe doors, cabinet doors, etc.



SUR-R-P700

SFR-R-P700

Three Sanding Frame Wide Belt Sander

三砂架定厚砂光机



性能特点

节省时间、提升生产效率、节省人工成本。
变频调速、简介方便。
模块化设计，任意组合砂削方式，满足各种不同砂光需求。

Performance features

Save time, improve production efficiency, save labor costs
Inverter speed adjustment, easy and convenient
Modular design, any combination of sanding methods, to meet various sanding needs

SUR-R-P700

SFR-R-P700

Three Sanding Frame Wide Belt Sander

三砂架定厚砂光机

新款改进

New improvements



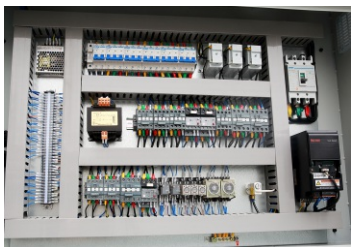
偏心加大胶定厚辊，加工精度高，偏心轴调整升降，方便、简洁，布局合理，操作简便。第三砂架抛光辊采用软橡胶抛光辊，提升砂品质。

Eccentric enlarged rubber roller, high precision. Eccentrically lift up and down, convenient and simple, easy operation. The 3rd roller frame use soft rubber material, improve the sanding quality.



偏心加大胶定厚辊，加工精度高，偏心轴调整升降，方便、简洁，布局合理，操作简便。第三砂架抛光辊采用软橡胶抛光辊，提升砂品质。

Eccentric enlarged rubber roller, high precision. Eccentrically lift up and down, convenient and simple, easy operation. The 3rd roller frame use soft rubber material, improve the sanding quality.



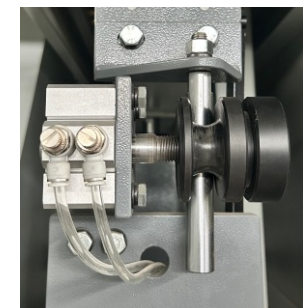
接触器运用法国施耐德品牌，稳定性高，主电机配有过载保护。

The electric parts adopt French brand-Schneider to ensure more stable. The main motor with overload protection system.



输送带采用台湾士林变频调整、操作简单方便。

The conveyor belt adopts Taiwan Shilin Frequency conversion adjustment, easy to operate.



新式摆动调整简便，摆摆柔和经久耐用。

The new swing adjustment is simple, the swing is soft and durable.



定厚仪采用按键式操控，精准度高，便于操作。

Constant thickness gauge with key type control, high precision,easy to operate



选用德国倍加福传感器控制砂带摆动及砂带跑偏

Choose Pepperl+Fuchs the sensor controls the sand belt swing and sand belt deviation



高端齿轮变频减速机，平稳持久耐用且与台湾士林变频器控制输送速度达到理想砂光效果。

High-end gear variable frequency reducer, stable and durable with Taiwan Shilin inverter control transmission speed to achieve the management want a sanding effect.

刨木砂光机技术参数

Planing wood sanding machine Specification

		SUR-R-P700	SFR-R-P700
最短加工长度	Shortest Processing Length	≤330mm	≤330mm
加工厚度	Processing thickness	3.0-150mm	3.0-150mm
第一砂架电机功率	First sand frame motor power	15kw	15kw
第二砂架电机功率	Second sand frame motor power	11kw	11kw
第三砂架电机功率	Third sand frame motor power	7.5kw	7.5kw
输送电机功率	Conveyor Motor Power	1.5kw（变频VFD）(2.2)	1.5kw（变频VFD）(2.2)
升降电机功率	Lift motor power	0.37kw	0.37kw
除尘毛刷电机功率	Dusting brush motor power	0.37kw	0.37kw
砂带尺寸	Belt size	1900*660mm	1900*660mm
工作气压	Working pressure	0.6-0.8mpa	0.6-0.8mpa
第一砂架线速度	1st Sanding Line Speed	22m/s	22m/s
第二砂架线速度	2nd Sanding Line Speed	22m/s	22m/s
第三砂架线速度	3rd Sanding Line Speed	11 m/s	11 m/s
吸尘风量	Dust Collecting Volume	4000m³/h	4000m³/h

数适用实木门、复合门、衣柜门、橱柜门等

Suitable for solid wood doors, composite doors, wardrobe doors, cabinet doors, etc.





SK-R-RP1300

Planer Sander

刨木砂光机

性能特点

刨砂机是集刨与砂，定厚与精细砂光为一体的高效率设备。
刨刀辊为螺旋刀，刀片为弧形刀，刨削量大，效率高。
输送调速机构为变频调速，操作简便灵活。
分段式压靴进料，进料端带有防反弹装置。
整机内带有三段压靴，保证刨削过程中工件的质量与安全
省电、省砂带，提高生产效率，提升产品砂光质量。
主要用于误差大、光滑度要求高的实木类定厚抛光。

Performance features

Planer Sander machine combines both plane and sanding functions, it's a high efficiency equipment integrated with thickness and precise sanding.
Planer roller uses spiral cutter, the blade is arc type blade, it can plan big volume effectively.
Feeding system uses frequency controller, easy operation and flexible.
Sectional type pressing feeding with Anti-rebound facilities.
3 sections pressing facilities inside the whole machine guaranteed the quality and safety of the work piece during planning and sanding.
Save electricity, save sanding belt, improving production capability and sanding quality.
It's mainly used for sanding the soil wood work piece whose big surface tolerance and high smoothness requirement .



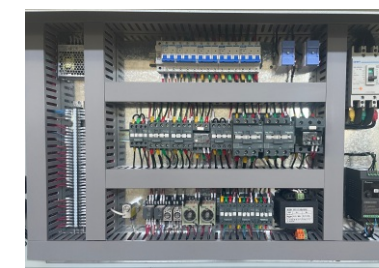
刨刀辊、定厚组式砂架，先刨后砂，高效节能。
Planer roller and sanding combining rollers, planning firstly and then sanding, effective and saving energy.

刨刀辊刀片，呈螺旋式密集分布，用于大切削量刨削、光滑度高、效率高、精密度。
The planning blade densely distributed at spiral type, it's good for high volume planning , high smoothness, efficiency and precision.



皮带轮与砂光辊结为一体，确保砂光辊的同心度，减少震动，提高砂削品质。

The belt wheel and the sanding roller are integrated to ensure the concentric degree of the sanding roller, reduce the vibration and improve the quality of sanding.



接触器运用法国施耐德品牌，稳定性高，主电机配有过载保护。

The electric parts adopt French brand-Schneider to ensure more stable. The main motor with overload protection system.

输送带采用台湾士林变频调整、操作简单方便。
The conveyor belt adopts Taiwan Shilin Frequency conversion adjustment, easy to operate.

SK-R-P650

Planer Sander

刨木砂光机

性能特点

刨砂机是集刨与砂，定厚与精细砂光为一体的高效率设备。
刨刀辊为螺旋刀，刀片为弧形刃，刨削量大，效率高。
输送调速机构为变频调速，操作简便灵活。
分段式压靴进料，进料端带有防反弹装置。
整机内带有三段压靴，保证刨削过程中工件的质量与安全
省电、省砂带，提高生产效率，提升产品砂光质量。
主要用于误差大、光滑度要求高的实木类定厚抛光。

Performance features

Planer Sander machine combines both plane and sanding functions, it's a high efficiency equipment integrated with thickness and precise sanding.
Planer roller uses spiral cutter, the blade is arc type blade, it can plan big volume effectively.
Feeding system uses frequency controller, easy operation and flexible.
Sectional type pressing feeding with Anti-rebound facilities.
3 sections pressing facilities inside the whole machine guaranteed the quality and safety of the work piece during planning and sanding.
Save electricity, save sanding belt, improving production capability and sanding quality.
It's mainly used for sanding the soil wood work piece whose big surface tolerance and high smoothness requirement .



刨刀辊、定厚组式砂架，先刨后砂，高效节能。
Planer roller and sanding combining rollers, planning firstly and then sanding, effective and saving energy.

刨刀辊刀片，呈螺旋式密集分布，用于大切削量刨削、光滑度高、效率高、精度度。
The planning blade densely distributed at spiral type, it's good for high volume planning , high smoothness, efficiency and precision.



配备气动压靴的刨刀辊与防反弹压辊及防反弹系统，防止板材啃头、啃尾、回弹。

The planer roller fixed with air pressing facility, Anti-rebound pressing roller and system, it can prevent rebounding of the material and denting.



输送带采用台湾士林变频调整、操作简单方便。

The conveyor belt adopts Taiwan Shilin Frequency conversion adjustment, easy to operate.

刨木砂光机技术参数

Planing wood sanding machine
Specification

		SK-RP650	SK-RP1000	SK-RP1300
最短加工长度	Shortest length	≤440mm	≤440mm	≤450mm
加工厚度	Processing thickness	10–150mm	10–150mm	10–100mm
刨刀电机功率	Planer motor power	7.5kw	11kw	22kw
第一砂架电机功率	First sand frame motor power	7.5kw	11kw	22kw
第二砂架电机功率	Second sand frame motor power	--	--	--
输送电机功率	Transmission motor power	1.5kw(变频)	2.2kw(变频)	4kw(变频)
除尘毛刷电机功率	Dusting brush motor power	0.37kw	0.37kw	0.37kw
升降电机功率	Lift motor power	0.37kw	0.37kw	0.37kw
刨刀线速度	Cutter line speed	36m/s	36m/s	36m/s
砂带尺寸	Belt size	1900*660mm	2200*1020mm	2200*1320mm
第一砂架线速度	The first line speed of sand	18m/s	18m/s	18m/s
第二砂架线速度	Second sand line speed	--	--	--
工作气压	Working pressure	0.6–0.8mpa	0.6–0.8mpa	0.6–0.8mpa
吸尘风量	Vacuum air volume	3500m³/h	10000m³/h	12000m³/h

		SK-R-RP650	SK-R-RP1000	SK-R-RP1300
最短加工长度	Shortest length	≤440mm	≤440mm	≤480mm
加工厚度	Processing thickness	10–150mm	10–150mm	10–100mm
刨刀电机功率	Planer motor power	7.5kw	11kw	22kw
第一砂架电机功率	First sand frame motor power	7.5kw(11)	11kw(22)	22kw(30)
第二砂架电机功率	Second sand frame motor power	7.5kw	11kw	22kw
输送电机功率	Transmission motor power	1.5kw(变频)	2.2kw(变频)	4kw(变频)
除尘毛刷电机功率	Dusting brush motor power	0.37kw	0.37kw	0.37kw
升降电机功率	Lift motor power	0.37kw	0.37kw	0.37kw
刨刀线速度	Cutter line speed	36m/s	36m/s	36m/s
砂带尺寸	Belt size	1900*660mm	2200*1020mm	2200*1320mm
第一砂架线速度	The first line speed of sand	22m/s	22m/s	22m/s
第二砂架线速度	Second sand line speed	18m/s	18m/s	18m/s
工作气压	Working pressure	0.55mpa	0.6mpa	0.6–0.8mpa
吸尘风量	Vacuum air volume	8000m³/h	12000m³/h	15000m³/h

		SK-R-R650	SK-R-R1000	SK-R-R1300
最短加工长度	Shortest length	≤280mm	≤280mm	≤380mm
加工厚度	Processing thickness	10–160mm	10–160mm	10–100mm(160)
刨刀电机功率	Planer motor power	7.5kw	11kw	22kw
第一砂架电机功率	First sand frame motor power	7.5kw(11)	11kw(22)	22kw(30)
第二砂架电机功率	Second sand frame motor power	7.5kw	11kw	22kw
输送电机功率	Transmission motor power	1.5kw(变频)	2.2kw(变频)	4kw(变频)
除尘毛刷电机功率	Dusting brush motor power	0.37kw	0.37kw	0.37kw
升降电机功率	Lift motor power	0.37kw	0.37kw	0.37kw
刨刀线速度	Cutter line speed	36m/s	36m/s	36m/s
砂带尺寸	Belt size	1900*660mm	2200*1020mm	2200*1320mm
第一砂架线速度	The first line speed of sand	22m/s	22m/s	22m/s
第二砂架线速度	Second sand line speed	18m/s	18m/s	18m/s(或变频)
工作气压	Working pressure	0.55mpa	0.6mpa	0.6mpa
吸尘风量	Vacuum air volume	8000m³/h	12000m³/h	15000m³/h

		SK-R-P650	SK-R-P1000	SK-R-P1300
最短加工长度	Shortest length	≤330mm	≤330mm	≤380mm
加工厚度	Processing thickness	10–160mm	10–160mm	10–100mm(可加厚)
刨刀电机功率	Planer motor power	7.5kw	11kw	22kw
第一砂架电机功率	First sand frame motor power	7.5kw(11)	11kw(18.5)	22kw(30)
第二砂架电机功率	Second sand frame motor power	7.5kw	11kw	15kw
输送电机功率	Transmission motor power	1.5kw(变频)	2.2kw(变频)	4kw(变频)
除尘毛刷电机功率	Dusting brush motor power	0.37kw	0.37kw	0.37kw
升降电机功率	Lift motor power	0.37kw	0.37kw	0.37kw
刨刀线速度	Cutter line speed	36m/s	36m/s	36m/s
砂带尺寸	Belt size	1900*660mm	2200*1020mm	2200*1320mm
第一砂架线速度	The first line speed of sand	18m/s	22m/s	22m/s
第二砂架线速度	Second sand line speed	11m/s	11m/s	11m/s
工作气压	Working pressure	0.6–0.8mpa	0.6–0.8mpa	0.6–0.8mpa
吸尘风量	Vacuum air volume	8000m³/h	12000m³/h	18000m³/h



SFR-RD1300

Upper floated Sander (For UV production line)

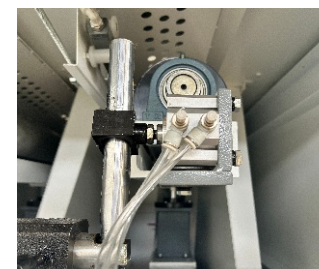
上浮式砂光机(UV连线专用)

性能特点

上浮式砂光机是在生产工艺线中可与其它加工设备配线使用的一款砂光设备，可与任何加工设备组合连线使用，可提高生产效率，降低人工成本及生产成本
适用于各种油漆面的砂光。
砂光辊变频调速，能适应各种砂光工艺要求。

Performance features

Upper floated Sander is the sanding machine can work together with other woodworking machines in production line ,and it can fit with any machines to combination production line. It can improve production efficiency.
Save labor and save cost.
The sanding roller adopts frequency control, can meet all demand of sanding process.



砂带清洁装置，清除粘在砂带上的粉尘，延长砂带使用寿命，提高砂光质量。
The belt with clean device to clean the dust on the belt ,increase the service life of belt , improve the sanding quality.



清洁砂带装置可调速，提升砂光质量
The cleaning belt device can be controlled speed, improve the sanding quality.

清洁砂带装置不使用时可关闭气源，节能降耗。
If no need use the clean device , it can be turn off to save energy.



大直径偏心砂光胶辊，皮带轮与辊子结为一体，确保砂光辊同心度，减少震动，提高砂削精度。
The big diameter sanding rubber roller , the belt wheel and the sanding roller are integrated to ensure the concentric degree of the sanding roller, reduce the vibration and improve the quality of sanding.

砂光辊带有感应升降功能，保护胶面确保工件不啃头、不扫尾
The sanding roller with interaction lifting function protects the rubber surface to ensure it wont sand out any edge of the panel.



SFRD1300

Upper floated Single roller Lacquer Sander

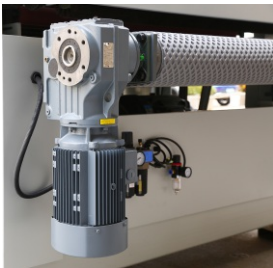
上浮式单辊底漆砂光机

性能特点

上浮式砂光机是在生产工艺线中可与其它加工设备配线使用的一款砂光设备，可与任何加工设备组合连线使用，可提高生产效率，降低人工成本及生产成本
适用于各种油漆面的砂光。
砂光辊变频调速，能适应各种砂光工艺要求。

Performance features

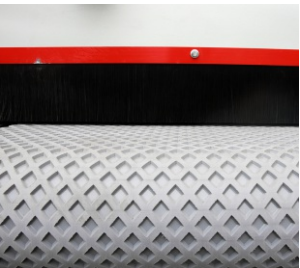
Upper floated Sander is the sanding machine can work together with other woodworking machines in production line ,and it can fit with any machines to combination production line. It can improve production efficiency.
Save labor and save cost.
The sanding roller adopts frequency control, can meet all demand of sanding process.



高端齿轮变频减速机，平稳持久耐用且与台湾士林变频器控制输送速度达到理想砂光效果。
High-end gear variable frequency reducer, stable and durable with Taiwan Shilin inverter control transmission speed to achieve the management want a sanding effect.



砂带清洁装置，清除粘在砂带上的粉尘，延长砂带使用寿命，提高砂光质量。
The belt with clean device to clean the dust on the belt ,increase the service life of belt , improve the sanding quality.



耐磨橡胶材质输送带摩擦力大，提升砂光质量
Adopting wearproof rubber conveyor belt to increase force of friction, improve sandingquality.
耐磨橡胶材质输送带，表面平整，精度高，经久耐用
The conveyor belt is mad of wearproof rubber, surface is smooth, high precision ,durable and steady.



SFR-RD650

Upper floated Double Rollers Lacquer Sander

上浮式双辊底漆砂光机

性能特点

上浮式砂光机是在生产工艺线中可与其它加工设备配线使用的一款砂光设备，可与任何加工设备组合连线使用，可提高生产效率，降低人工成本及生产成本
适用于各种油漆面的砂光。
砂光辊变频调速，能适应各种砂光工艺要求。

Performance features

Upper floated Sander is the sanding machine can work together with other woodworking machines in production line ,and it can fit with any machines to combination production line. It can improve production efficiency.
Save labor and save cost.
The sanding roller adopts frequency control, can meet all demand of sanding process.



双辊偏心调整，简洁方便。砂带升起由气囊表控制气压，不改变橡胶辊软硬度。
Double roll eccentricity adjustment, simple and convenient.
The belt rises from the airbag control table does not change the pressure, their rubber roller hardness.



整体“上浮”的独特设计，使上浮部分重心稳定，平稳性极好，调整简便。
The overall upper floating design makes raising steady, keep core stability, easy to operate.



梯形丝杠采用国外先进技术在三角丝杠的技术上加以改进，精度高，稳定性好。
Trapezoidal lead screw uses advanced international technology and improved on the basis of the triangle lead screw ,it ensures high precision and steady.

加大型号链条不容易拉长脱落，传送精密度高。
The extra - large chain is very hard to broken and stretch, feeds with high precision

上浮式底漆砂光机（UV连线专用）

Upper floated Sander（For UV production line）

		SFR-D650	SFR-D1000	SFR-D1300
最短加工长度	Shortest length	≤300mm	≤320mm	≤380mm
加工厚度	Processing thickness	2–150mm	2–150mm	2–100mm(可加高)
砂架电机功率	Sand frame motor power	5.5kw(变频)	7.5kw(变频)	11kw(变频)(15)
3M抛光辊电机功率	3M polishing roller motor power	2.2kw(变频)	3kw(变频)	3kw(变频)
输送电机功率	Transmission motor power	1.5kw(变频)	1.5kw(变频)	2.2kw(变频)
升降电机功率	Lift motor power	0.75kw	0.75kw	0.75kw
除尘毛刷电机功率	Dusting brush motor power	0.37kw	0.37kw	0.37kw
砂架砂带线速度	Sand belt speed frame	3–12m/s	3–12m/s	3–12m/s
砂带尺寸	Belt size	1900*660mm	2200*1020mm	2620*1320mm
工作气压	Working pressure	0.6–0.8mpa	0.6–0.8mpa	0.6–0.8mpa
吸尘风量	Vacuum air volume	3500m³/h	5000m³/h	8000m³/h

		SFR-RD650	SFR-RD1000	SFR-RD1300
最短加工长度	Shortest length	≤280mm	≤320mm	≤380mm
加工厚度	Processing thickness	2–150mm	2–150mm	2–100mm(可加高)
第一砂架电机功率	First sand frame motor power	5.5kw(变频)	7.5kw(变频)(11)	15kw(变频)(18.5)
第二砂架电机功率	Second sand frame motor power	5.5kw(变频)	7.5kw(变频)(11)	11kw(变频)(15)
输送电机功率	Transmission motor power	1.5kw(变频)	1.5kw(变频)	2.2kw(变频)
升降电机功率	Lift motor power	0.75kw	0.75kw	0.75kw
除尘毛刷电机功率	Dusting brush motor power	0.37kw	0.37kw	0.37kw
砂架砂带线速度	Sand belt speed frame	3–12m/s	3–12m/s	3–12m/s
砂带尺寸	Belt size	1900*660mm	2200*1020mm	2620*1320mm
工作气压	Working pressure	0.6–0.8mpa	0.6–0.8mpa	0.6–0.8mpa
吸尘风量	Vacuum air volume	3500m³/h	5000m³/h	8000m³/h

		SFR-R-D650	SFR-R-D1000	SFR-R-D1300
最短加工长度	Shortest length	≤300mm	≤320mm	≤380mm
加工厚度	Processing thickness	2–150mm	2–150mm	2–100mm
第一砂架电机功率	First sand frame motor power	5.5kw(变频)	7.5kw(变频)(11)	11kw(变频)(15、18.5)
第二砂架电机功率	Second sand frame motor power	5.5kw(变频)	7.5kw(变频)(11)	11kw(变频)(15)
3M抛光辊电机功率	3M polishing roller motor power	2.2kw(变频)	3kw(变频)	3kw(变频)
输送电机功率	Transmission motor power	1.5kw(变频)	2.2kw(变频)	3kw(变频)
升降电机功率	Lift motor power	0.75kw	0.75kw	0.75kw
除尘毛刷电机功率	Dusting brush motor power	0.37kw	0.37kw	0.37kw
砂架砂带线速度	Sand belt speed frame	3–12m/s	3–12m/s(变频)	3–12m/s(变频)
砂带尺寸	Belt size	1900*660mm	2200*1020mm	2620*1320mm
工作气压	Working pressure	0.6–0.8mpa	0.6–0.8mpa	0.6–0.8mpa
吸尘风量	Vacuum air volume	5000m³/h	8000m³/h	10000m³/h

		SFRD650	SFRD1000	SFRD1300
最短加工长度	Shortest length	≤280mm	≤320mm	≤380mm
加工厚度	Processing thickness	2–150mm	2–150mm	2–100mm(可加高)
砂架电机功率	Sand frame motor power	5.5kw(变频) 7.5	7.5kw(变频) 11	11kw(变频) 15
输送电机功率	Transmission motor power	1.5kw(变频)	1.5kw(变频)	2.2kw(变频)
升降电机功率	Lift motor power	0.75kw	0.75kw	0.75kw
除尘毛刷电机功率	Dusting brush motor power	0.37kw	0.37kw	0.37kw
砂架砂带线速度	Sand belt speed frame	3–12m/s	3–12m/s	3–12m/s
砂带尺寸	Belt size	1900*660mm	2200*1020mm	2620*1320mm
工作气压	Working pressure	0.6–0.8mpa	0.6–0.8mpa	0.6–0.8mpa
吸尘风量	Vacuum air volume	3500m³/h	5000m³/h	8000m³/h



High Glossy Lacquer Sander

SR-R-RD650

High Glossy Lacquer Sander

高光底漆砂光机

性能特点

欧洲先进技术基础上，开发的新型底漆砂光机。定厚辊为软胶辊，并通过精确动、静平衡处理。砂带转速由变频控制，以符合三胺底、PU油漆、PE底漆、UV油漆等砂光需求。输送带传送采用变频器调速机构，可以根据工件要求，选择适当的送料速度，已确保工件砂光品质。在机器的出料端安装3M抛光辊，可清除砂光成品上的粉尘。砂带上方安装吹尘管可清除砂带上的粉尘。是家具、竹木地板生产的必备设备之一。砂削精度高，不啃头、不扫尾、不擦边。

Performance features

It's a new type lacquer sanding machine which developed from European advanced technology. Thickness roller use soft rubber roller and treated through precise dynamic/static balance. Sanding belt speed changed by frequency controller to meet the demand of sanding Melamine base, PU, PE, UV etc. painting. Conveyor speed changed also through frequency controller, feeding speed can be adjusted to control work piece sanding quality. 3M polish roller installed on export end of machine to clean dust on sanding products. Dust blower also installed on top of sanding belt to blow out dust on sanding belt. It's the essential equipment to manufacture furniture and bamboo/solid wood flooring. High sanding precision, it won't sand out any edge of the panel.



适用于油漆面的砂光。
三砂光辊独立变频调速，适用于各种油漆面砂光调整。
三辊均采用偏心调整，方便实用。
Applicable for lacquer painting sanding work. Three sanding rollers use independent frequency controller, applicable to all kinds of paint surface adjustment. All three rollers use eccentric adjustment, convenient and practical.



每条砂光辊可独立调整砂削误差。
砂带清洁装置，清除粘附在砂带的粉尘，延长砂带使用寿命，提高砂光精度。
Each sanding roller can adjust sanding tolerance separately. Sanding belt clean facility can remove dust stick on sanding belt, extend belt life and improve sanding precision.



High Glossy Lacquer Sander

SR-RD1000/1300

High Glossy Lacquer Sander

高光底漆砂光机

性能特点

欧洲先进技术基础上，开发的新型底漆砂光机。定厚辊为软胶辊，并通过精确动、静平衡处理。砂带转速由变频控制，符合多种油漆砂光需求。输送带传送采用无极变速机构，可以根据工件要求，选择适当的送料速度，已确保工件砂光品质。在机器的出料端安装刷光辊，可清除砂光成品上的粉尘。砂带上方安装吹尘管可清除砂带上的粉尘。是家具、竹木地板生产的必备设备之一。砂削精度高，不啃头、不扫尾、不擦边。

Performance features

It's a new type lacquer sanding machine which developed from European advanced technology. Thickness roller use soft rubber roller and treated through precise dynamic/static balance. Sanding belt speed changed by frequency controller to meet the demand of sanding Melamine base, PU, PE, UV etc. painting. Conveyor speed changed also through frequency controller, feeding speed can be adjusted to control work piece sanding quality. 3M polish roller installed on export end of machine to clean dust on sanding products. Dust blower also installed on top of sanding belt to blow out dust on sanding belt. It's the essential equipment to manufacture furniture and bamboo/solid wood flooring. High sanding precision, it won't sand out any edge of the panel.



适用于油漆面的砂光。
三砂光辊独立变频调速，适用于各种油漆面砂光调整。
三辊均采用偏心调整，方便实用。

Applicable for lacquer painting sanding work. Three sanding rollers use independent frequency controller, applicable to all kinds of paint surface adjustment. All three rollers use eccentric adjustment, convenient and practical.



每条砂光辊可独立调整砂削误差。
砂带清洁装置，清除粘附在砂带的粉尘，延长砂带使用寿命，提高砂光精度。

Each sanding roller can adjust sanding tolerance separately. Sanding belt clean facility can remove dust stick on sanding belt, extend belt life and improve sanding precision.



Lacquer Sander

SR-RD650

Lacquer Sander

底漆砂光机

性能特点

欧洲先进技术基础上，开发的新型底漆砂光机。
砂光辊为软胶辊，并通过精确动平衡处理。
砂带转速由变频控制，以符合各种油漆砂光需求。
输送带传送采用变频调速机构，可以根据工件要求，选择适当的送料速度，已确保工件砂光品质。
砂带上方安装吹尘管可清除砂带上的粉尘，确保砂光质量。
适用于多种油漆面砂光。

Performance features

It's a new type lacquer sanding machine which developed from European advanced technology.
Thickness roller use soft rubber roller and treated through precise dynamic/static balance.
Sanding belt speed changed by frequency controller to meet the demand of sanding different painting.
Conveyor speed changed also through frequency controller, feeding speed can be adjusted to control work piece sanding quality.
Dust blower also installed on top of sanding belt to blow out dust on sanding belt.
Applicable for various painting surface sanding.



双辊偏心调整，简洁方便。砂带升起由气囊表控制气压，不改变橡胶辊软硬度。
Double rollers adjusted eccentrically, simple and convenient. Air bag controls air pressure when sanding belt rise up, it won't change the hardness of rubber rollers.



皮带轮与砂光辊结为一体，确保砂光辊的同心度，减少震动，提高砂削品质。
Belt wheel integrated with sanding roller, it guarantees the concentric degree with sanding roller, reduce vibration and improve sanding quality.



输送带采用台湾士林变频调整，操作简单方便。
The conveyor belt adopts Taiwan Shilin Frequency conversion adjustment, easy to operate.



Lacquer Sander

SR-RD1000/1300

Lacquer Sander

底漆砂光机

性能特点

欧洲先进技术基础上，开发的新型底漆砂光机。
砂光辊为软胶辊，并通过精确动平衡处理。
砂带转速由变频控制，以符合各种油漆砂光需求。
输送带传送采用变频调速机构，可以根据工件要求，选择适当的送料速度，已确保工件砂光品质。
砂带上方安装吹尘管可清除砂带上的粉尘，确保砂光质量。
适用于多种油漆面砂光。

Performance features

It's a new type lacquer sanding machine which developed from European advanced technology.
Thickness roller use soft rubber roller and treated through precise dynamic/static balance.
Sanding belt speed changed by frequency controller to meet the demand of sanding different painting.
Conveyor speed changed also through frequency controller, feeding speed can be adjusted to control work piece sanding quality.
Dust blower also installed on top of sanding belt to blow out dust on sanding belt.
Applicable for various painting surface sanding.



双辊偏心调整，简洁方便。砂带升起由气囊表控制气压，不改变橡胶辊软硬度。
Double rollers adjusted eccentrically, simple and convenient. Air bag controls air pressure when sanding belt rise up, it won't change the hardness of rubber rollers.



皮带轮与砂光辊结为一体，确保砂光辊的同心度，减少震动，提高砂削品质。
Belt wheel integrated with sanding roller, it guarantees the concentric degree with sanding roller, reduce vibration and improve sanding quality.



输送带采用台湾士林变频调整，操作简单方便。
The conveyor belt adopts Taiwan Shilin Frequency conversion adjustment, easy to operate.



Veneer Laminating Sander

SR-RM1300

Veneer Laminating Sander

贴面专用砂光机

性能特点

主要用于贴面前定厚，与贴面后精细抛光；中纤板精细砂光。
偏心加大胶定厚辊，加工精度高，偏心轴调整升降，方便、简洁，布局合理，操作简便。框架式结构，稳定性高，减震、抗噪性强。
真空吸附与压靴配合解决薄板贴面后变形而导致砂光出现头、尾磨穿现象。
抛光砂架可变频调速采用“光、机、电、气”一体化，运行可靠。
设有故障显示功能，便于维修。
在出现故障情况下（设备气压不足、砂带跑偏刹车、紧急刹车），输送床产生自动下降，可保护工件不被破坏。

Performance features

Mainly used for panel thickness plain before laminating and precise sanding after veneer laminating; MDF precise sanding.
Eccentric enlarged rubber roller, high precision. Eccentrically lift up and down, convenient and simple.
Complete frame structure with higher stability, reduce vibration.
Vacuum absorption cooperates with pressing facility to solve the problem of thin panel sanded to broken because of laminating deformation.
Polishing rollers fixed with frequency controller, integrated with “light, machine, electric, air” together, running reliable.
Fault display function, easy maintenance.
In case of failure (lack of pneumatic pressure, abrasive belt brake, emergency brake), conveyor table drop down automatically to protect work piece free from being damaged.

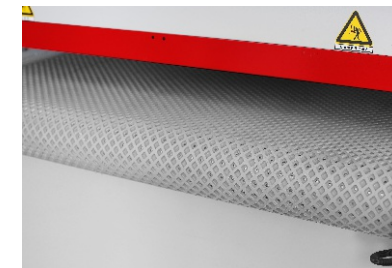


双偏心辊式结构精密、调整简便
Double eccentric rollers precision construction ,easy adjustment.

压靴结构能保证板材在砂削过程中的平稳性。(选购件)
Pressing construction ensure the boards stable during the panning.

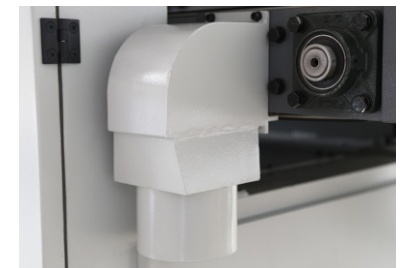


大直径双调偏心辊，可有效对工件表面进行砂光，使工件表面更加光泽均匀。
With large diameter double separately adjust eccentric rollers ,it can sand the surface of work piece perfectly ,make the surface more smooth.



小方格橡胶带加大摩擦力；带有真空吸附装置，可对小工件、贴面后变形的工件进行精细砂光。(选购件)

Small square rubber belt with enlarged friction; With vacuum absorption device, it can precisely sand small work piece and deformed work piece after laminating.



真空吸附装置增加板材输送过程的平稳性，牢固性。(选购件)

Vacuum absorption device ensure the boards are feed steady and fixed.



SR-R650

Wood Veneer Sander

单板薄片砂光机

性能特点

主要用于各种实木类旋切单板或刨切单板及卧式带锯单板的砂光。
也可以用于胶皮、层皮类的砂光。

Performance features

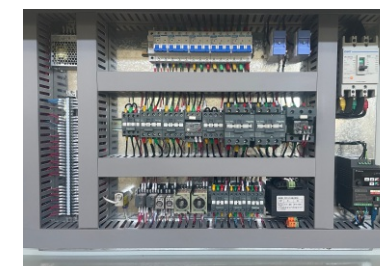
It is main sanding for all kinds of rotary cut soil wood veneer and slicing veneer and the veneer cut by horizontal band saw.
It is also suitable for sanding rubber veneer and leather veneer.



双偏心辊式结构精密、调整简便。
Double eccentric rollers precision construction ,
easy adjustment.

压靴结构能保证板材在砂削过程中的平稳性。
(选购件)

Pressing construction ensure the boards stable
during the panning.



接触器运用**法国施耐德**品牌，稳定性高，主电机配有过载保护。

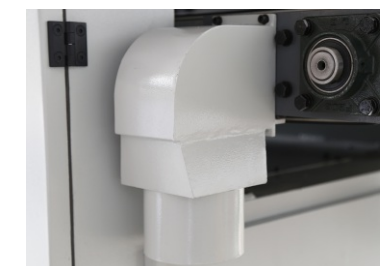
The electric parts adopt French brand-Schneider to ensure more stable. The main motor with overload protection system.

输送带采用**台湾士林**变频调整、操作简单方便。
The conveyor belt adopts Taiwan Shilin Frequency conversion adjustment, easy to operate.



小方格橡胶带加大摩擦力；
带有真空吸附装置，可对小工件、贴面后变形的工件进行精细砂光。(选购件)

Small square rubber belt with enlarged friction;
With vacuum absorption device, it can precisely sand small work piece and deformed work piece after laminating.



真空吸附装置增加板材输送过程的平稳性，牢固性。
(选购件)

Vacuum absorption device ensure the boards are feed steady and fixed.



底漆砂光机技术参数

Lacquer sanding machine
Specification

		SR-D650	SR-D1000	SR-D1300
最短加工长度	Shortest length	≤300mm	≤320mm	≤380mm
加工厚度	Processing thickness	2–100mm(可加高)	2–100mm(可加高)	2–100mm(可加高)
砂架电机功率	Sand frame motor power	5.5kw(变频)	7.5kw(变频)	11kw(变频)(15)
3M抛光辊电机功率	3M polishing roller motor power	2.2kw(变频)	3kw(变频)	3kw(变频)
输送电机功率	Transmission motor power	0.75kw(变频)	1.5kw(变频)	2.2kw(变频)
升降电机功率	Lift motor power	0.37kw	0.37kw	0.37kw
除尘毛刷电机功率	Dusting brush motor power	0.37kw	0.37kw	0.37kw
砂架砂带线速度	Sand belt speed frame	3–12m/s	3–12m/s	3–12m/s
砂带尺寸	Belt size	1900*660mm	2200*1020mm	2200*1320mm
工作气压	Working pressure	0.4–0.5mpa	0.4–0.5mpa	0.4–0.6mpa
吸尘风量	Vacuum air volume	3500m³/h	5000m³/h	8000m³/h

		SR-R-D650	SR-R-D1000	SR-R-D1300
最短加工长度	Shortest length	≤300mm	≤320mm	≤380mm
加工厚度	Processing thickness	2–100mm	2–100mm	2–100mm
第一砂架电机功率	First sand frame motor power	5.5kw(变频)	7.5kw(变频)(11)	11kw(变频)(15、18.5)
第二砂架电机功率	Second sand frame motor power	5.5kw(变频)	7.5kw(变频)(11)	11kw(变频)(15)
3M抛光辊电机功率	3M polishing roller motor power	2.2kw(变频)	3kw(变频)	3kw(变频)
输送电机功率	Transmission motor power	1.5kw(变频)	2.2kw(变频)	3kw(变频)
升降电机功率	Lift motor power	0.37kw	0.37kw	0.37kw
除尘毛刷电机功率	Dusting brush motor power	0.37kw	0.37kw	0.37kw
砂架砂带线速度	Sand belt speed frame	3–12m/s	3–12m/s(变频)	3–12m/s(变频)
砂带尺寸	Belt size	1900*660mm	2200*1020mm	2200*1320mm
工作气压	Working pressure	0.4–0.6mpa	0.4–0.6mpa	0.4–0.6mpa
吸尘风量	Vacuum air volume	5000m³/h	8000m³/h	10000m³/h

木皮贴面砂光机技术参数

Veneer Laminating sanding machine
Specification

		SR-RM1300	SR-R650
最短加工长度	Shortest length	≤380mm	最短加工长度Shortest length≤280mm
加工厚度	Processing thickness	2–100mm	加工厚度Processing thickness0.4–100mm
第一砂架电机功率	First sand frame motor power	30kw(37)	第一砂架电机功率First sand frame motor power11kw(15)
第二砂架电机功率	Second sand frame motor power	18.5kw(变频)	第二砂架电机功率Second sand frame motor power7.5kw(变频)
输送电机功率	Transmission motor power	3kw(4kw)变频	输送电机功率Transmission motor power1.5kw
升降电机功率	Lift motor power	0.37kw	升降电机功率Lift motor power0.37kw
除尘毛刷电机功率	Dusting brush motor power	0.37kw	除尘毛刷电机功率Dusting brush motor power0.37kw
砂架砂带线速度	Sand belt speed frame	0–18m/s(变频)	砂架砂带线速度Sand belt speed frame0–18m/s(变频)
砂带尺寸	Belt size	2200*1320mm	砂带尺寸Belt size1900*660mm
工作气压	Working pressure	0.6–0.8mpa	工作气压Working pressure0.4–0.6mpa
吸尘风量	Vacuum air volume	15000m³/h	吸尘风量Vacuum air volume5000m³/h

单板薄片砂光机

Wood Veneer Sander



SR-R-R(RP/P)1300

Three Sanding Frame Wide Belt Sander

三砂架定厚砂光机

性能特点

该机床是细木工板、多层板、刨花板、集成材加工首选设备。
砂架采用模块化设计，任意组合不同砂削方式，满足各种不同砂光需求。
定厚辊采用钢质加重型，砂削量大，平整度高。
大功率输送调速，输送有力，生产效率高。

Performance features

It is the preferred sanding machine for hipboard ,sandwich panel ,chipboard, and Glued laminated Timber.
The sanding shelf adopts modular design ,any combination with different sanding way ,meeting different sanding demand.
The thickness roller uses heavy duty steel ,large sanding & planning volume, more smooth.
It equips large power feeding motor to ensure stable feeding ,high production efficiency.



接触器运用**法国施耐德**品牌，稳定性高，主电机配有**过载保护**。

The electric parts adopt French brand-Schneider to ensure more stable. The main motor with overload protection system.

输送带采用**台湾士林**变频调整、操作简单方便。

The conveyor belt adopts Taiwan Shilin Frequency conversion adjustment, easy to operate.



偏心加大胶定厚辊，加工精度高，偏心轴调整升降，方便、简洁，布局合理，操作简便。第三砂架抛光辊采用软橡胶抛光辊，提升砂品质。

Eccentric enlarged rubber roller, high precision. Eccentrically lift up and down, convenient and simple, easy operation. The 3rd roller frame use soft rubber material, improve the sanding quality.



皮带轮与砂光辊结为一体，确保砂光辊的同心度，减少震动，提高砂削品质。

The belt wheel and the sanding roller are integrated to ensure the concentric degree of the sanding roller, reduce the vibration and improve the quality of sanding.



卧式变频调速减速机、运行平稳经久耐用
Horizontal variable frequency speed reducer, smooth operation and durable



Three Sanding Frame Wide Belt Sander

SR-R-P(RP/R)1000

Three Sanding Frame Wide Belt Sander

三砂架定厚砂光机

性能特点

强力定厚砂光机；主要用于需砂削量大，光滑度高的设备。偏心钢定厚辊，加工精度高，偏心轴调整升降，方便、简洁，布局合理，操作简便。框架式结构，稳定性高，减震性强砂削量大、光滑度高，砂光精度高。采用“光、机、电、气”一体化，运行可靠。设有故障显示功能，便于维修。在出现故障情况下（设备气压不足、砂带跑偏刹车、紧急刹车），输送床产生自动下降，可保护工件不被破坏。

Performance features

Strong fixed sanding thickness is main for large sanding volume ,high smoothness .Eccentric steel thickness roll, high precision , eccentric shaft adjust lifting up and down, convenient, simple, reasonable layout, easy operation. Frame structure ,high stable, large sanding capacity ,high smooth ,and high sanding precision. Integrated with "light, electric, machine, pneumatic" together, working reliable. Fault display function, easy maintenance. In case of failure (lack of pneumatic pressure, abrasive belt brake, emergency brake), conveyor table drop down automatically to protect work piece free from being damaged.



偏心加大胶定厚辊，加工精度高，偏心轴调整升降，方便、简洁，布局合理，操作简便。第三砂架抛光辊采用软橡胶抛光辊，提升砂品质。

Eccentric enlarged rubber roller, high precision. Eccentrically lift up and down, convenient and simple, easy operation. The 3rd roller frame use soft rubber material, improve the sanding quality.



皮带轮与砂光辊结为一体，确保砂光辊的同心度，减少震动，提高砂削品质。

The belt wheel and the sanding roller are integrated to ensure the concentric degree of the sanding roller, reduce the vibration and improve the quality of sanding.



接触器运用法国施耐德品牌，稳定性高，主电机配有过载保护。

The electric parts adopt French brand-Schneider to ensure more stable. The main motor with overload protection system.

输送带采用台湾士林变频调整、操作简单方便。The conveyor belt adopts Taiwan Shilin Frequency conversion adjustment, easy to operate.



Three Sanding Frame Wide Belt Sander

SR-R-P(RP/R)650

Three Sanding Frame Wide Belt Sander

三砂架定厚砂光机

性能特点

强力定厚砂光机；主要用于需砂削量大，光滑度高的设备。偏心钢定厚辊，加工精度高，偏心轴调整升降，方便、简洁，布局合理，操作简便。框架式结构，稳定性高，减震性强砂削量大、光滑度高，砂光精度高。采用“光、机、电、气”一体化，运行可靠。设有故障显示功能，便于维修。在出现故障情况下（设备气压不足、砂带跑偏刹车、紧急刹车），输送床产生自动下降，可保护工件不被破坏。

Performance features

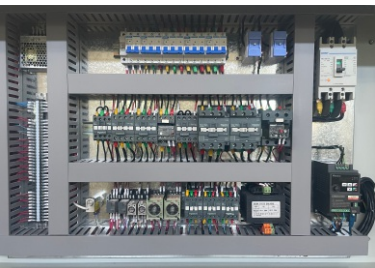
Strong fixed sanding thickness is main for large sanding volume ,high smoothness .Eccentric steel thickness roll, high precision ,eccentric shaft adjust lifting up and down, convenient, simple, reasonable layout, easy operation. Frame structure ,high stable, large sanding capacity ,high smooth ,and high sanding precision. Integrated with "light,electric, machine, pneumatic" together, working reliable. Fault display function, easy maintenance. In case of failure (lack of pneumatic pressure, abrasive belt brake, emergency brake), conveyor table drop down automatically to protect work piece free from being damaged.



偏心加大胶定厚辊，加工精度高，偏心轴调整升降，方便、简洁，布局合理，操作简便。第三砂架抛光辊采用软橡胶抛光辊，提升砂品质。
Eccentric enlarged rubber roller, high precision. Eccentrically lift up and down, convenient and simple, easy operation. The 3rd roller frame use soft rubber material, improve the sanding quality.



皮带轮与砂光辊结为一体，确保砂光辊的同心度，减少震动，提高砂削品质。
The belt wheel and the sanding roller are integrated to ensure the concentric degree of the sanding roller, reduce the vibration and improve the quality of sanding.



接触器运用**法国施耐德**品牌，稳定性高，主电机配有过载保护。
The electric parts adopt French brand-Schneider to ensure more stable. The main motor with overload protection system.
输送带采用**台湾士林**变频调整、操作简单方便。
The conveyor belt adopts Taiwan Shilin Frequency conversion adjustment, easy to operate.



Three Sanding Frame Wide Belt Sander

SR-RP650

Two Sanding Frame Wide Belt Sander

两砂架定厚砂光机

性能特点

采用框架式结构，减震抗噪性强；吸收国外先进技术并结合国内用户的实际需求而全新设计、制造。钢定厚辊与皮带轮一体，加工精度高，调整升降方便，布局合理，操作简便，是各种实木类、细木工板、纤维板、夹板等各种小工件需定厚抛光的先进设备。
可用两组砂光辊同时定厚，也可用砂光垫精细抛光。
砂削量大、砂光精度高。
采用“光、机、电、气”一体化，运行可靠。
RP型特有的辊、垫砂光，解决前道粗砂砂痕，提高抛光效果。

Performance features

Adopting Frame structure ,high stable, less vibration and high anti-noise capability, absorbing the foreign advanced technology and combining with the actual demand of the domestic user, we make the new design and manufacture. Steel thickness and belt wheel are integrated , ensure the processing accuracy is high and easy lifting up and down, ,convenient, simple, reasonable layout, easy operation. It's ideal equipment for the thickness even and polishing of various solid wood, MDF, fiber board, plywood etc.
It's can use two groups sanding roller for thickness even sanding at the same time, it can also use sanding pad for precise sanding.
High sanding volume with accurate sanding precision.
Integrated with "light, electric, machine, pneumatic" together, running reliable.
Special roller/pad sanding of RP model, solve the problem of rough sanding trace left on work piece, improve sanding affection.



框架式结构，高品质标准机；满足多样化砂光需求比传统机型精度提升20%；定厚辊采用偏心轴方式调节。
Frame style structure, high quality standard machine; satisfy various sanding requirements and precision is 20% higher than traditional models. Sanding roller adjusted by eccentric shaft.



每条砂光辊可独立调整砂削误差；皮带轮与砂光辊结为一体，确保砂光辊的同心度，减少震动，提高砂削品质。
Each sanding roller sanding volume can be adjusted separately; wheel and sanding roller integrated together and insured the concentricity of sanding rollers, reduce vibration and improve sanding quality.



输送带采用台湾士林变频调整，操作简单方便。
The conveyor belt adopts Taiwan Shilin Frequency conversion adjustment, easy to operate.



Three Sanding Frame Wide Belt Sander

SR-RP1000/1300

Two Sanding Frame Wide Belt Sander

两砂架定厚砂光机

性能特点

是各种实木集成材、细木工板、纤维板、夹板等各种木门、家具需定厚抛光的先进设备。
此砂光机采用框架式结构，减震抗噪性强；吸收国外先进技术并结合国内用户的实际需求而全新设计、制造。钢定厚辊与皮带轮一体，加工精度高，调整升降方便，布局合理，操作简便。设有故障显示功能，便于维修。在出现故障情况下（设备气压不足、砂带跑偏刹车、紧急刹车），输送床产生自动下降，可保护工件不被破坏。
可用两组砂光辊同时定厚，也可用砂光垫精细抛光。
砂削量大、砂光精度高。
采用“光、机、电、气”一体化，运行可靠。
RP型特有的辊、垫砂光，辊解决前道粗砂砂痕，垫砂光提高抛光效果。

Performance features

It's ideal equipment for the thickness even and polishing of various solid wood, MDF, fiber board, plywood etc.
Adopting Frame structure ,high stable, less vibration and high anti-noise capability, absorbing the foreign advanced technology and combining with the actual demand of the domestic user, we make the new design and manufacture. Steel thickness and belt wheel are integrated , ensure the processing accuracy is high and easy lifting up and down ,convenient, simple, reasonable layout, easy operation.
It's can use two groups sanding roller for thickness even sanding at the same time, it can also use sanding pad for precise sanding.
High sanding volume with accurate sanding precision.
Integrated with "light, electric, machine, pneumatic" together, running reliable.
Special roller/pad sanding of RP model, solve the problem of rough sanding trace left on work piece, improve sanding affection.



框架式结构，高品质标准机；满足多样化砂光需求比传统机型精度提升20%；定厚辊采用偏心轴方式调节。

Frame structure, high - quality standard machine, the precision of the traditional model is improved by 20%, and the thickness of the roller is adjusted by the eccentric shaft.



每条砂光辊可独立调整砂削误差；皮带轮与砂光辊结为一体，确保砂光辊的同心度，减少震动，提高砂削品质。

Each sanding roller can be adjusted independently to adjust the sand cutting error; the belt wheel and the sand light roller are integrated, to ensure the concentric degree of the sand light roll, reduce vibration, improve the quality of sand.



选用德国倍加福传感器控制砂带摆动及砂带跑偏。
Choose Pepperl+Fuchs the sensor controls the sand belt swing and sand belt deviation

定厚砂光机技术参数

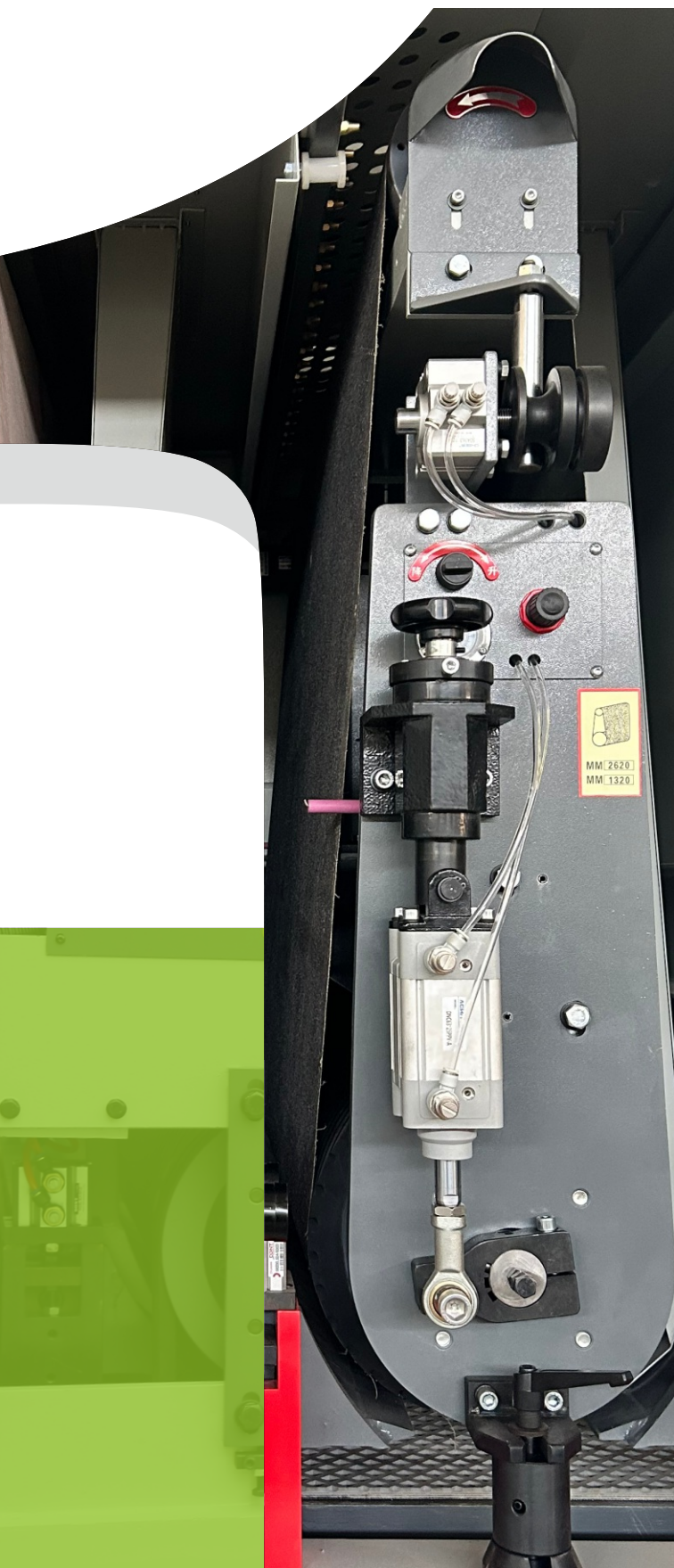
Thickness Sander Technical Parameters

		SR-RP650	SR-RP1000	SR-RP1300
最短加工长度	Shortest length	≤440mm	≤440mm	≤450mm
加工厚度	Processing thickness	2.5–150mm	2.5–150mm	2.5–100mm
第一砂架电机功率	First sand frame motor power	11kw(15)	22kw(30)	30kw(37、45)
第二砂架电机功率	Second sand frame motor power	7.5kw	11kw(18.5)	22kw
输送电机功率	Transmission motor power	1.5kw	1.5kw(2)	2.2kw(4)
升降电机功率	Lift motor power	0.37kw	0.37kw	0.37kw
除尘毛刷电机功率	Dusting brush motor power	0.37kw	0.37kw	0.37kw
砂带尺寸	Belt size	1900*660mm	2200*1020mm	2200*1320mm
工作气压	Working pressure	0.6–0.8mpa	0.6–0.8mpa	0.6–0.8mpa
第一砂架线速度	The first line speed of sand	22m/s	22m/s	22m/s
第二砂架线速度	Second sand line speed	18m/s	18m/s	18m/s
吸尘风量	Vacuum air volume	3500m³/h	5000m³/h	8000m³/h

		SR-R-R650	SR-R-R1000	SR-R-R1300
最短加工长度	Shortest length	≤280mm	≤330mm	≤350mm
加工厚度	Processing thickness	2.5–150mm	2.5–150mm	2.5–100mm
第一砂架电机功率	First sand frame motor power	15kw(18.5)	22kw(30)	37kw(45)
第二砂架电机功率	Second sand frame motor power	11kw(15)	18.5kw(22)	30kw(37)
第三砂架电机功率	Third sand frame motor power	7.5kw(11)	15kw(18.5)	22kw
输送电机功率	Transmission motor power	2.2kw	3kw	4kw(5.5)
升降电机功率	Lift motor power	0.37kw	0.37kw	0.37kw
除尘毛刷电机功率	Dusting brush motor power	0.37kw	0.37kw	0.37kw
砂带尺寸	Belt size	1900*660mm	2200*1020mm	2500*1320mm
工作气压	Working pressure	0.6–0.8mpa	0.6–0.8mpa	0.6–0.8mpa
第一砂架线速度	The first line speed of sand	22m/s	22m/s	22m/s
第二砂架线速度	Second sand line speed	22m/s	22m/s	22m/s
第三砂架线速度	Third sand line speed	14m/s	14m/s	12m/s/18m/s
吸尘风量	Vacuum air volume	4500m³/h	8000m³/h	15000m³/h

		SR-R-P650	SR-R-P1000	SR-R-P1300
最短加工长度	Shortest length	≤330mm	≤330mm	≤330mm
加工厚度	Processing thickness	2.5–150mm	2.5–150mm	3–100mm
第一砂架电机功率	First sand frame motor power	15kw	22kw(30)	30kw(37、45)
第二砂架电机功率	Second sand frame motor power	11kw	18.5kw(22、15)	18.5kw(30、22)
第三砂架电机功率	Third sand frame motor power	7.5kw	11kw	15kw
输送电机功率	Transmission motor power	1.5kw(变频)(2.2)	1.5kw(3)	4kw(5.5)
升降电机功率	Lift motor power	0.37kw	0.37kw	0.37kw
除尘毛刷电机功率	Dusting brush motor power	0.37kw	0.37kw	0.37kw
砂带尺寸	Belt size	1900*660mm	2200*1020mm	2500*1320mm
工作气压	Working pressure	0.6–0.8mpa	0.6–0.8mpa	0.6–0.8mpa
第一砂架线速度	The first line speed of sand	22m/s	22m/s	22m/s
第二砂架线速度	Second sand line speed	22m/s	22m/s	22m/s
第三砂架线速度	Third sand line speed	11m/s	11m/s	11m/s
吸尘风量	Vacuum air volume	4500m³/h	8000m³/h	15000m³/h

		SR-R-RP650	SR-R-RP1000	SR-R-RP1300
最短加工长度	Shortest length	≤440mm	≤440mm	≤450mm
加工厚度	Processing thickness	2.5–150mm	2.5–150mm	2.5–100mm
第一砂架电机功率	First sand frame motor power	15kw(18.5)	22kw(30)	37kw(45)
第二砂架电机功率	Second sand frame motor power	11kw(15)	18.5kw(22)	30kw(37)
第三砂架电机功率	Third sand frame motor power	7.5kw(11)	15kw(18.5)	22kw
输送电机功率	Transmission motor power	2.2kw	3kw	4kw(5.5)
升降电机功率	Lift motor power	0.37kw	0.37kw	0.37kw
除尘毛刷电机功率	Dusting brush motor power	0.37kw	0.37kw	0.37kw
砂带尺寸	Belt size	1900*660mm	2200*1020mm	2500*1320mm
工作气压	Working pressure	0.6–0.8mpa	0.6–0.8mpa	0.6–0.8mpa
第一砂架线速度	The first line speed of sand	22m/s	22m/s	22m/s
第二砂架线速度	Second sand line speed	22m/s	22m/s	22m/s
第三砂架线速度	Third sand line speed	18m/s	18m/s	18m/s
吸尘风量	Vacuum air volume	4500m³/h	8000m³/h	15000m³/h

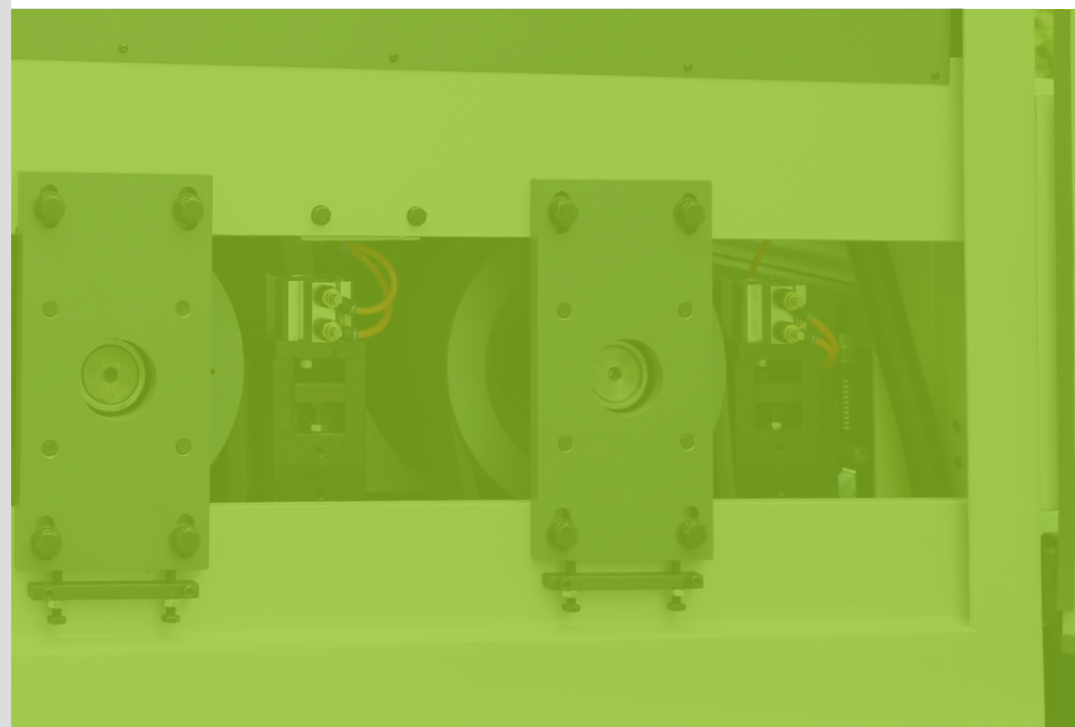


力争质量至上 服务至上

创新决定产品质量，服务成就企业未来。

使客户赚钱并满意于我们的服务才是企业得以兴旺发达的基础，我们的服务宗旨就是“让客户满意，让员工满意，让合作伙伴满意”。无论是国内还是国外的设备，亦或刚购置还是购置多年的设备，鑫海臺科都是以帮助客户解决问题为主导，始终相信“让用户做我们最好的广告商”。

鑫海臺科与国内外友人共同发展，共同进步，携手共进，创造一个美好的明天！



砂 光 机 匠 心 品 牌